

# 21 Central Extension

## District 4-H News



- Make sure to re-enroll if you are a returning member or enroll if you are a new member! Use the following link to use the online enrollment system: <https://v2.4honline.com> if you have questions, please do not hesitate to reach out to the Extension Office and we would gladly help! We ask that you complete your enrollment by December 1<sup>st</sup>. Please look at our website for more resources for enrolling <https://www.21central.k-state.edu/4-h/enroll/>
- Look at the new project selection guide as some projects changed their name. Please contact the Extension Office if you have questions about this! [https://www.kansas4-h.org/projects/project-guides/2023\\_2024%20Project%20Listing.pdf](https://www.kansas4-h.org/projects/project-guides/2023_2024%20Project%20Listing.pdf)
- Reminder that the Stafford County Achievement Night will be at 4:00pm at the Stafford County Annex in St. John in the large meeting room on Saturday, November 4<sup>th</sup>. We will be celebrating the achievements of our 4-Hers. Please stay afterwards for a Spaghetti Dinner (provided by 4-H Council) and a Fundraiser presented by the Stafford County Fairboard for the new Fairbuilding!
- The Edwards County 4-H Achievement Night will be held on Sunday, November 5, 2023, at 5:30pm at the Fairbuilding in Kinsley! The evening will begin with a meal with awards to follow. The Edwards County 4-H Foundation Members are also invited to attend as they hold their Annual Meeting in Conjunction with Achievement Night.
- The T-Shirts sold at the Kansas State Fair are available through an online order system. They must be ordered online by December 1, 2023, and will be delivered mid-December. Take the shirt order to your club to do a mass order and save on shipping- they make for great Christmas gifts or could make for a great club shirt! The proceeds of these sales benefit the Kansas Youth Leadership Council. Order here: [https://www.companycasuals.com/20234-HTEES/start.jsp?fbclid=IwAR2bCi66IXnoNVfoMrdj3Vl\\_GeBBDastrZm735GjL96kRa-Og3A30mLdY](https://www.companycasuals.com/20234-HTEES/start.jsp?fbclid=IwAR2bCi66IXnoNVfoMrdj3Vl_GeBBDastrZm735GjL96kRa-Og3A30mLdY)
- Be sure to pick up your projects that went to the State Fair at the Extension Office!
- Registration for Rock Springs opens November 15, 2023, with early bird registration lasting until December 31!
- If you would like to start on record books for the 2023-2024 4-H year, reach out to Marissa! (Find some age-appropriate goals for record book planning on page 4!)
- It is never too early to start thinking about your Presentation Topic for Club Day! Marissa is always willing to help you with this as well!
- Make sure to join our Facebook Groups (Edwards County 4-H Members; Stafford County 4-H Families; Jolly Workers 4-H – SF Co, KS; Cloverleaf 4H; Corn Valley 4H Club; Northern Star 4H club)
- For Animal Science opportunities, visit this website <https://www.asi.k-state.edu/extension/youth-programs/>

**4-H Project Selection Guide** This guide explains all 37 4-H projects offered. When a family enrolls in 4-H, this guide is especially helpful. There are several fun and exciting projects to choose from, so make sure to take a look! <https://bookstore.ksre.ksu.edu/pubs/4H1065.pdf>

**Volunteers and 4HOnline** We encourage parents, project leaders, and club leaders to sign up on 4HOnline. We are available to help you complete the process and would be willing to attend your next 4-H meeting to help get families entered. If you want our assistance, please contact the Extension Office. If you are a new family to 4-H, please go to <https://www.21central.k-state.edu/4-h/enroll/> or feel free to contact your community club leaders or the Extension Office staff.

We are in desperate need of **Project Leaders!!** You do not have to be an expert to be a project leader; just interested. The Extension Office has a lot of materials to help you get started as a project leader. If you are interested or know of someone who could help, please contact the Extension Office. Our most popular projects needing leaders are Beef and Bucket Calf, Shopping in Style (formerly Buymanship), Foods, Photography, Swine, and Visual Arts (Crafts). Some other projects that have a growing interest are Meat Goats, Leadership, Sheep, Rocketry, and Woods.

We know you just finished them, but it is not too early to start your **2023-24 4-H Records**. 😊 Take a look at the application for the achievement pin you will be applying for this year. Some of the requirements take some planning, like being enrolled in Leadership or needing to attend a state event. These forms can be found at: <https://www.21central.k-state.edu/4-h/record-books/>. Do not hesitate to ask questions if you need help.

**Livestock 4-H Families:** two great state event opportunities for your 4-H family are **Jr. Beef Producer Day and Jr. Sheep Producer Day** in Manhattan. The ASI department puts together these fantastic events for 4-H'ers and their families, and it is well worth a trip to the Little Apple. Jr. Beef Producer Day is March 2<sup>nd</sup>; Jr. Sheep Producer Day is March 16<sup>th</sup>. Mark your calendars and be on the lookout for registration information.

**Attention Edwards County 4-H'ers!** Holiday Food Box dates are as follows:

- Thanksgiving food sort will be Friday, November 17<sup>th</sup> at 4 p.m. at the fair building in Kinsley.
- Thanksgiving food box pick up is Monday, November 20<sup>th</sup> from 4 to 6 p.m.
- Christmas food box sorting will be Tuesday, December 19<sup>th</sup> at 4 p.m. at the fair building.
- Christmas food box pick up is Thursday, December 21<sup>st</sup> from 4 to 6 p.m.

If you are interested in enrolling in 4-H, if you enrolled for the 1<sup>st</sup> time this year, if you are a newer family and still feel like you have questions, or if you would just like a refresher course on all things 4-H, please consider attending **New Family Night** for all the information you need!

- Stafford County- November 15 @ 7:00pm at the Stafford County Extension Office
- Edwards County- November 29 @ 7:00pm at the Edwards County Fairbuilding

4-H MEMBERS ENROLLED IN POULTRY OR WHO HAVE POULTRY, PLEASE READ THE FOLLOWING:



# HPAI:

## Highly Pathogenic Avian Influenza

Highly pathogenic avian influenza, or HPAI, is a rapidly spreading viral disease that can infect many types of birds. Avian influenza, often called avian flu or bird flu, can be common, but some strains are highly pathogenic, which means they are more deadly. Introduced by migrating wild birds, HPAI can spread through spring migration and affect **all** domestic poultry — small and backyard flocks as well as commercial industries.

Poultry with HPAI **do not** survive the illness. Vaccines for HPAI are not readily available.

### Signs of Avian Influenza

- Coughing and sneezing
- Difficulty breathing
- Extreme depression
- Lack of energy
- Decrease in feed or water intake
- Swelling or purple discoloration of head, eyelids, comb, wattle and legs
- Decrease in egg production
- Sudden unexplained death

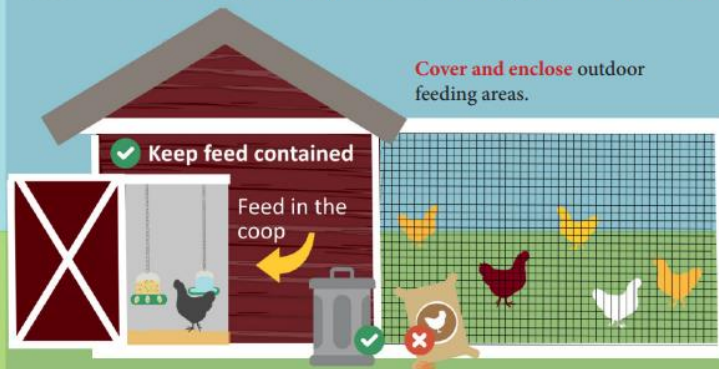
Biosecurity is your best option to prevent HPAI from entering your small or backyard poultry flock.

**Here is what you can do:**

## Protect Your Small Flock from Avian Influenza

1

**Avoid** attracting wild birds and waterfowl to your home or farm. Song birds, sparrows, starlings, etc. are **low risk**.



- **Clean up** feed spills.
- **Reduce** puddles and standing water.
- **Avoid** visiting ponds and streams, especially with pets.
- **Do not** move birds from farm to farm.
- **Isolate** new birds.

2

**Limit or halt** travel with your birds to sales, shows and swaps.

Ensure you have clean hands, clothes, and footwear before handling your birds if you attend events. **Do not** allow others to handle your birds.



3

**Limit** your birds' visitors.

If someone must visit your birds: discuss where they have been. Have them wash their hands and wear clean clothes and footwear.



Call your veterinarian if your flock shows signs of influenza or you suspect exposure. No veterinarian? Call the Kansas Department of Agriculture's Division of Animal Health at 785-564-6601.



Now is a great time to start working on 4-H Project Records! Please look at the following graphic to set some age-appropriate goals for the 2023-2024 4-H Year!

# Let's set some age appropriate goals!

Below I have written a goal for a junior, intermediate, and a senior all in the same project. Notice how there are different types of goals for each age level.

| Junior  | Intermediate   | Senior  |
|---|--|---|
| <p>I would like to walk my bucket calf 3 times a week to make sure she is halter-broke before weigh-in.</p> <p>I would like to learn two new brush strokes and use them both in a painting.</p> | <p>I would like to attend two clipping workshops to improve my clipping skills before the fair.</p> <p>I would like to attend two pottery classes a week to improve my shaping skills.</p> | <p>I would like to present at a project meeting about one specific clipping technique to help younger 4-Hers.</p> <p>I would like to become a Junior Project leader in the Visual Arts project and help assist the Project Leader with lessons.</p> |
| <p>Focus on learning the basics of the project.</p>   | <p>Focus on improving your skills in the project and starting to take on some leadership roles.</p>  | <p>Focus on leadership and mastering skills in your project.</p>  |

**A good rule of thumb is three to five goals per project for ages 7 to 10, four to eight goals per project for ages 11 to 13, and 7 to 12 goals per project for ages 14 to 18.**

Visit this website for more information:  
<https://bookstore.ksre.ksu.edu/pubs/4H1100.pdf>

Let's have a great 4-H Year! If you have any questions, please reach out to me at [mlhurst@ksu.edu](mailto:mlhurst@ksu.edu) or by phone:

- Kinsley Office: 620-659-2149
- St. John Office: 620-549-3502

Marissa Hurst, 21 Central- 4-H Youth Development Agent

Kansas State University Agricultural Experiment Station and Cooperative Extension Service K-State Research and Extension is an equal opportunity provider and employer.